



# Contents

COMPANY INFORMATION .....	3
SOUND GREEN ARGUMENTS .....	4
PROFILE OF GABRIEL .....	5
ENVIRONMENTAL POLICY .....	7
THE ENVIRONMENTAL MANAGEMENT SYSTEM .....	7
ENVIRONMENTAL REPORT OF MANAGEMENT .....	8
THE WORKING ENVIRONMENT .....	11
EMPLOYEE PARTICIPATION .....	11
ENVIRONMENTAL APPROVALS .....	12
ENVIRONMENTAL ACTION PROGRAMME 2010/2011 ..	12
FURTHER INFORMATION .....	13
ACCOUNTING POLICIES .....	13
ENVIRONMENTAL AUDITOR'S CERTIFICATE .....	14
ENVIRONMENTAL DATA .....	15
NOTES .....	16

# Company information

## COMPANY

Gabriel A/S  
Hjulgagervej 55  
9000 Aalborg  
Reg. no. 176574  
VAT no. 12 72 13 07  
Phone: +45 96 30 31 00  
Fax.: +45 98 13 25 44  
www.gabriel.dk  
E-mail: mail@gabriel.dk

## GROUP RELATIONSHIPS

Gabriel A/S is a wholly owned subsidiary of the publicly listed company Gabriel Holding A/S.

## SECTOR

Textile industry

## PRINCIPAL ACTIVITIES

Production of furniture fabrics including the processes of dyeing and finishing.

## LEGISLATION

Gabriel's activities in Denmark are covered by environmental legislation and regulations established by the City of Aalborg.

## SUPERVISORY AUTHORITY

City of Aalborg

## FINANCIAL YEAR

01.10.09 - 30.09.10

## NUMBER OF EMPLOYEES

63

## EXTERNAL AUDITOR AND ACCREDITED ENVIRONMENTAL VERIFICATION

Danish Standards Association Certification

## NACE CODE

13.92 - Manufacture of made-up textile articles, except apparel.

## AREA IN USE

According to information provided by the Danish Building and Dwelling Register, Gabriel's total area has been calculated at 31,860 square metres. The building/paved area covers 9,530 square metres, of which 3,715 square metres consist of roads and parking areas.

The undeveloped area consists of a park area bordering the river, which was a precondition for the chosen location of the company in 1851.

# Sound green arguments

## SOUND GREEN ARGUMENTS FOR USING QUALITY FURNITURE FABRICS FROM GABRIEL

Gabriel is Europe's biggest manufacturer of environmentally labelled quality furniture fabrics.

Gabriel does its own processing, starting with wool from New Zealand and ending with the finished fabric ready for use in upholstery.

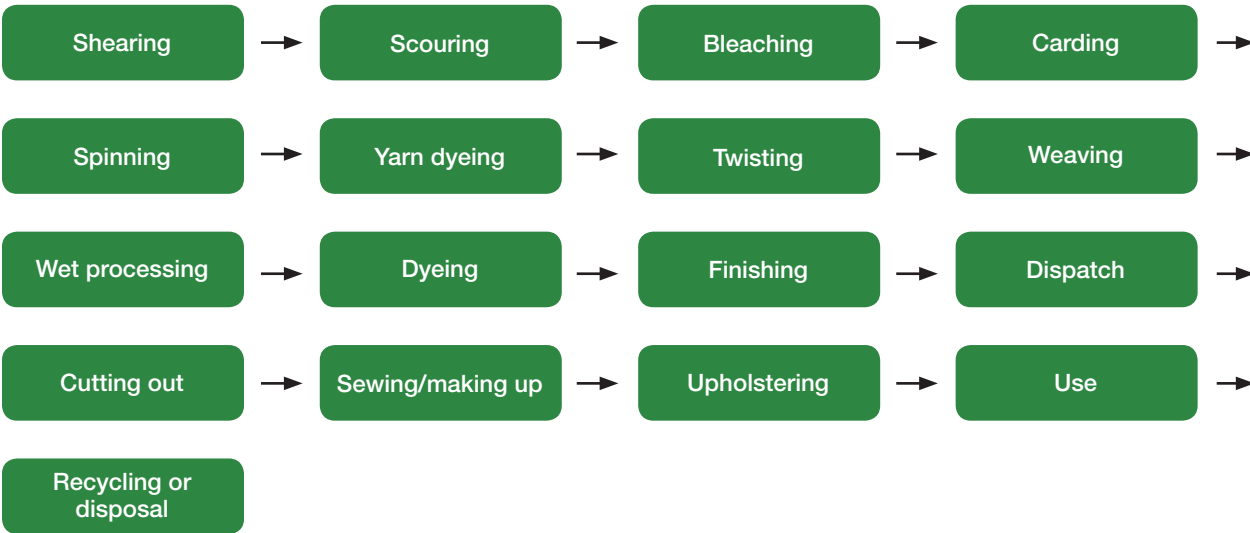
The purpose of this environmental report is to

provide information for our users, customers, employees, the authorities, shareholders, the local community and others interested in environmental conditions at Gabriel.

Gabriel's environmental management is certified under DS/EN ISO 14001:2004.

Gabriel's quality assurance is certified under DS/EN ISO 9001:2000, the international standard for quality assurance.

## PROCESSES CARRIED OUT OUTSIDE GABRIEL'S SITE FOR THE PRODUCT CATEGORY WOOLLEN FURNITURE FABRICS



# Profile of Gabriel

## PHILOSOPHY

Innovation and value-creating partnerships are keywords in Gabriel's philosophy.

Gabriel is a niche company which develops, manufactures and sells furniture fabrics and related products and services for areas of use in which there are mandatory requirements concerning special product properties, design, logistics, and documented quality assurance and environmental management.

## VISION

- Gabriel will be the preferred research and development partner and supplier to selected leading international manufacturers and major consumers of upholstered furniture, seats and upholstered surfaces.
- Gabriel will achieve Blue Ocean status via an innovative business concept and by obtaining patents, licences, closed shop agreements etc.
- Gabriel will achieve the status of a particularly attractive workplace and partner company among competent employees and companies.

## SALES DIVISIONS

Gabriel's sales are focused on three areas:

- Contract (office, conference, hospital and care, hotel, restaurant, theatre and concert, cinema, education, airports etc.)
- Home (upholstered furniture, chairs)
- Transport (train, plane, bus, car)

## GROWTH STRATEGY - GABRIEL IS GROWING WITH THE BIGGEST

Gabriel's growth is based on close development partnerships and trade with about 50 selected leading international major clients in a global strategy.

Possible acquisitions, alliances and new busi-

ness areas are under constant evaluation with a view to improving the group's competitiveness and value-creating activities.

## CORPORATE MODEL

Gabriel seeks to fulfil its vision and objectives via the group's strategy, which is implemented with focus on four core processes:

1. Global key account sales activities
2. Innovation in product and process
3. Logistics
4. Competitiveness in price

Since 2002, Gabriel has been using the Balanced Score Card (BSC) model for implementation of the company's strategy.

Gabriel's corporate model requires a process-oriented method of work which has been introduced in recent years.

## MANAGEMENT SYSTEMS

The following management systems are used in the Gabriel group:

- Quality control under DS/ISO 9001 since 1991 (China from 2006)
- Environmental management under EMAS/ISO 14001 since 1996 (China from 2006)
- Corporate model – Balanced Score Card since 2002
- Innovation Cup participant since 2006
- Development – Blue Ocean Strategy since 2005.

## PRODUCT LABELS

- The EU Flower on main products since 2003
- Oeko-Tex 100
- Cradle to Cradle

## SOCIAL RESPONSIBILITY

- United Nations Global Compact

# Profile of Gabriel - continued

## VALUE CHAIN

Gabriel's value chain covers all steps from concept to end user.

## INNOVATION

Gabriel wants to develop as a growth business which focuses on innovation, sustainability and earnings.

Close collaboration within Gabriel's network of customers, users, suppliers, consultants and competent employees ensures evaluation of new ideas and possibilities.

Our goal is to ensure that at least 30% of turnover derives from products and services launched less than five years ago.

## EMPLOYEES

All employees at Gabriel know and work to achieve our common goal.

Gabriel wants to attract and retain ambitious, qualified employees who seek and accept challenges.

The daily dialogue and delegation of responsibilities creates dynamism and efficiency. Constant changes, demands for fast handling and adaptation require intellectual and professional flexibility in all staff.

The individual employee's qualifications and professional competence are kept up-to-date via job development and relevant training.

Gabriel has a good and informal work climate based on trust, reliability, mutual respect and an awareness of shared responsibility.

## QUALITY AND THE ENVIRONMENT

Services provided by Gabriel must correspond accurately to customer needs and expectations.

The company's production and distribution must proceed with due respect for the need to ensure a continuing reduction in resource consumption and emissions which might impact upon the environment.

Gabriel's position as a quality and environmentally conscious company is evidenced by its certification under ISO 9001, ISO 14001 and the EMAS Eco-Management and Audit Scheme.

Gabriel A/S is licensed to use the EU Flower environmental label, which guarantees the safety of employees during the production process, users of the fabrics, and the environment.

For further information on Gabriel, please visit [www.gabriel.dk](http://www.gabriel.dk).



# Environmental policy

The environmental management system covers all functions at Gabriel, including the Aalborg site and all products and services supplied by the company.

Energy consumption has an important impact on the environment, and energy management is an integral part of Gabriel's environmental management. Energy management covers supply systems with significant energy consumption. Environmental goals and the environmental action programme must include energy considerations and ensure ongoing improvements in energy consumption.

The company's general objectives are documented in a business plan prepared once a year for the period 1/10 to 30/9. The business plan covers measurable environmental goals. These goals, together with responsibility and competence, must be known by all employees.

Cleaner technology and environmental improvements are introduced on an ongoing basis with due consideration of their technical and economic consequences and the prevention of pollution.

Gabriel conducts an open and close dialogue on environmental requirements with the authorities. The company is pledged to respect relevant legislation and relevant statutory requirements in the area of the environment as well as other provisions to which the company has committed itself.

Gabriel prepares an environmental report in connection with the end of the financial year. The report includes information on significant environmental impacts and objectives. The environmental report is available to the public and distributed to all the company's employees.

Those of the company's employees in contact with customers are able to provide accurate information on Gabriel's environmental objectives and policies. Guidance must be provided to

customers on significant environmental aspects of the use, re-use and ultimate disposal of the company's products.

The company's subcontractors must be selected on their ability to comply with environmental requirements and their willingness to enter into an open and close collaboration to achieve optimal solutions.

Contractors working at Gabriel's Aalborg site must comply with the same environmental requirements applying to Gabriel.

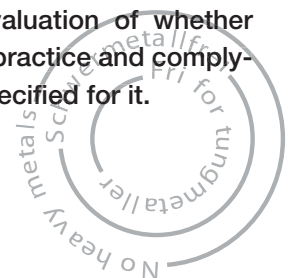
## The environmental management system

The environmental management system is an integral part of Gabriel's total management system, which covers the company's management, core and support processes.

The relationships between the individual processes are specified. This applies to responsibility, input and output, and the performance of the various activities.

The environmental management system applies to the entire supply chain, where the same emphasis is placed on environmental factors in partners' operations as internally at Gabriel.

Gabriel's management system is audited by Gabriel and the Danish Standards Association. The assessments include an evaluation of whether the system is functioning in practice and complying with the requirements specified for it.



# Environmental report of management

The company's environmental work in 2009/10 focused on supply chains and products.

In contrast to earlier years, the report is not concerned with the environmental impacts of the production in Aalborg, as this has been outsourced from the Aalborg factory.

The report contains a description of the implementation of the environmental action programme for 2009/10 and the follow-up on environmental goals.

## IMPROVEMENT PROJECTS, AALBORG:

- **Analysis of upholstery solutions with better recycling possibilities:**

The analysis shows that polyester fabrics should be laminated with polyester foam, as other types of foam make recycling difficult.

Upholstery solutions which consist of different materials can be pulverised mechanically and, for example, reused in Gabriel's "Silent Solution" screens.

- **Product development in accordance with the environmental concept Cradle to Cradle:**

The development project has been successfully implemented, and Gabriel can now supply selected colours and designs from the existing product range with C2C certification.

- **Dismantling of technical installations with focus on the minimisation of environmental impacts:**

Installations have been dismantled, and a large proportion of materials has been passed on for reuse, partly as spare parts at the dye works ScanDye, while the waste has been sorted at source for recycling. Dismantling caused no accidents and had no impact on the environment.

- **The improvement project covers three initiatives:**

1. Increased use of sea freight rather than air freight from the Far East.

2. Reduction of the need for transport via more efficient warehousing structure.

3. Customers will gain increased possibilities for selection of forms of transport with low energy consumption.

Logistics were optimised and raw materials in the supply chain are now transported to a higher extent as sea freight, which is the best solution for the environment.

Gabriel's warehouse was moved to Lithuania next to the dye works ScanDye, which minimises transport needs between warehouse and production.

Gabriel has formalised the management of all transport in the new organisational unit "TransportMaster", which optimises all transport. This work includes the reviewing of contracts with customers on the form of delivery.

- **Expansion of the product range to include more environmentally- and health-labelled designs:**

Gabriel's range of woollen furniture fabrics which has been labelled with the Flower environmental label for several years has now also been labelled with the Oeko-Tex health label. This label makes it easier for customers to choose environmentally sound solutions Oeko-Tex is a widely used health label and further supports Gabriel's philosophy of supplying products which meet documented quality and environmental requirements.

## MEASURABLE IMPROVEMENT GOALS IN AALBORG:

- **Reduction of consumption of heating by at least 20% from 35,207 m<sup>3</sup> in 2008/09 to 28,562 m<sup>3</sup>:**

The heating consumption was 35,587 m<sup>3</sup>. The goal was not reached because more tenants than expected moved into Gabriel Business Park during the year.

# Environmental report of management - continued

Consumption was also negatively affected by a very long and cold winter, which increased the need for heating.

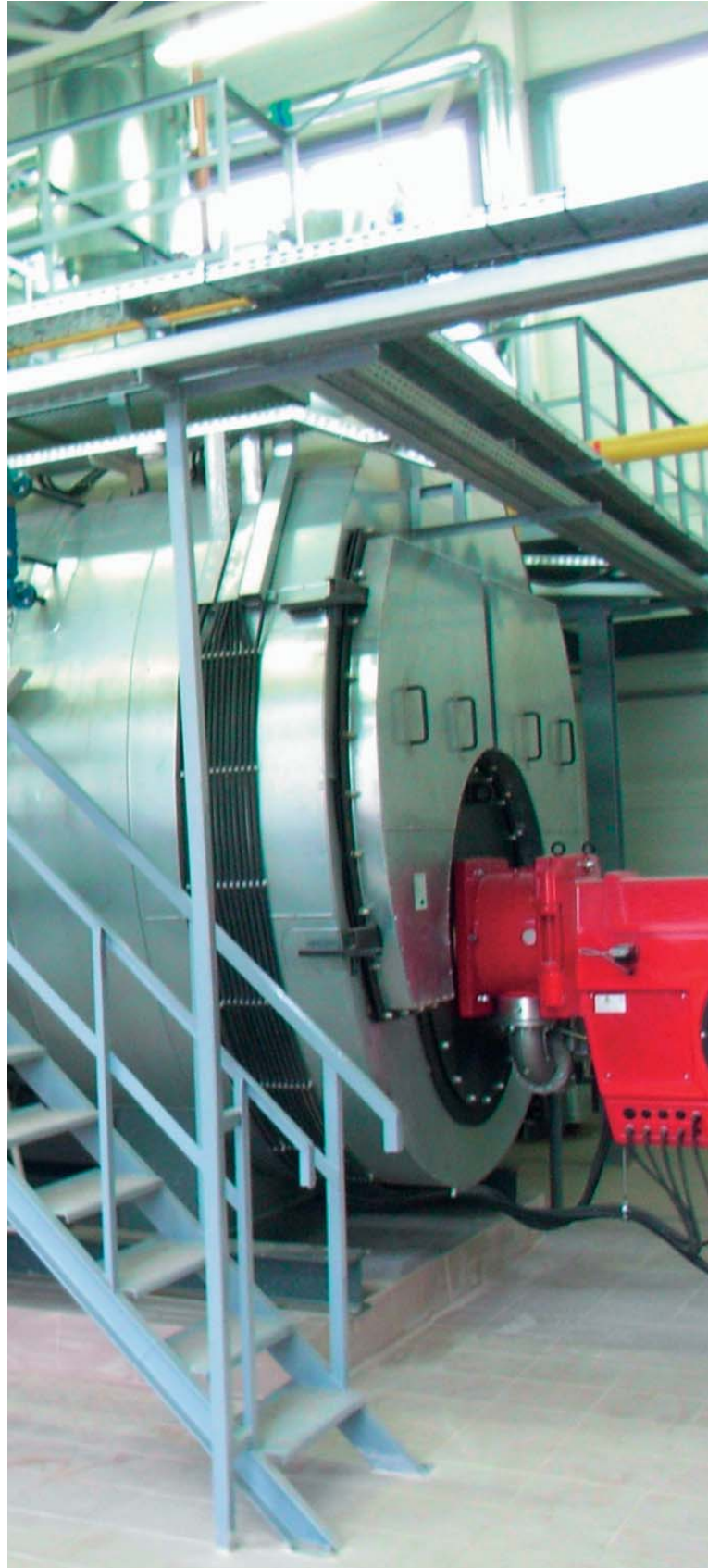
- **Reduction of electricity consumption equivalent to 100,000 kWh. The basis is last year's consumption of approximately 660,000 kWh excluding production:** Energy consumption was 405,800 kWh and the goal was thus reached inter alia by using energy-saving IT equipment.
- **Reduction of paper consumption by 20% from approx. 7,000 kg to 5,600 kg:** Consumption was 2,235 kg and the goal was thus reached. The reduction was achieved mainly by discontinuing a number of standard printouts of computerised lists and instead extracting data which the user can see on the screen.

At the end of the financial year, Gabriel's employees made up 55% of the total number of users of the property. The consumption of electricity, heating and water concerning Gabriel's activities is therefore considerably lower than the figures stated.

Determining principles and methods which can relate these environmental impacts to the individual tenants is part of the environmental action programme for 2010/11.

## MEASURABLE IMPROVEMENT GOALS AT THE DYE WORKS SCANDYE:

- **Reduction of current water consumption by at least 7%, from 204 litres/kg to 190 litres/kg:** Water consumption was 171 litres/kg, and the goal was thus reached.
- **Reduction of current gas consumption by at least 9%, from 1.36 m<sup>3</sup> natural gas/kg to 1.24 m<sup>3</sup>/kg:** Consumption was 1.11 m<sup>3</sup> natural gas/kg, and the goal was thus reached.



# Environmental report of management - continued

- **Reduction of current electricity consumption by at least 1%, from 1.77 kWh/kg to 1.75 kWh/kg:**  
Consumption was 1.58 kWh/kg, and the goal was thus reached.

## CRITERIA FOR DETERMINATION OF SIGNIFICANT ENVIRONMENTAL IMPACTS

Following Gabriel's environmental policy, significant environmental impacts are determined on the basis of the following criteria for direct and indirect environmental impacts:

- Energy consumption and energy production.
- Quantities of waste water and their content of substances with an environmental impact.
- Chemicals and dyes.
- The total quantity of waste.
- Information in safety datasheets.
- Statutory limit values.
- Requirements under the EU Flower eco-label.
- Requirements under the Oeko-Tex health label.
- New information from institutes, authorities and others with extensive expertise in the area of the environment.

The importance of environmental impacts is expressed by setting up key figures which show the impact relative to production.

The goal is to minimise the relative environmental impact.

## ASSESSMENT OF ENVIRONMENTAL IMPACTS AT THE AALBORG SITE

The requirements regarding noise specified by the City of Aalborg were complied with. The terms are given in notes on page 17.

Oil contamination at an old oil tank was found in November when carrying out earthworks. The oil tank was last used in 1998 when it was emptied and cleaned.

Gabriel has notified the City of Aalborg of the contamination and investigations have been started to establish the extent of the contamination for the purpose of removing it or taking other measures.

The environmental data are given on page 15.

## ASSESSMENT OF INDIRECT ENVIRONMENTAL IMPACTS

Indirect environmental impacts at subcontractors' premises are determined on the basis of the same criteria of significance which apply to Gabriel's activities in Aalborg.

Environmental matters are evaluated in visits to subcontractors, and Gabriel requires its suppliers to comply with all local statutory requirements.

Subcontractors are also evaluated in relation to Gabriel's environmental requirements, and action plans are reviewed with suppliers to ensure that their environmental impacts are constantly being reduced.

The environmental audits made at selected subcontractors' premises include mapping of environmental parameters and environmental management, and an assessment of compliance with ISO 14001 requirements.

The criteria for labelling with the EU Flower are also used.

## Significant indirect environmental impacts at subcontractors' premises include:

- Energy consumption and waste water in scouring and dyeing.
- Consumption of chemicals.
- Energy consumption.
- Raw materials.
- Waste from production.
- Waste water.
- Transport of raw materials and finished goods.

# Environmental report of management - continued

Consumption of raw materials is primarily wool from New Zealand and polyester for production of furniture fabrics.

The environmental qualities of Gabriel's products ensure that there is no impact on the environment from either processing or many years of use by the consumer.

The products can be handled after their useful lives as ordinary non-hazardous waste or recycled, as they contain no hazardous substances such as heavy metals.

Gabriel makes audits and other follow-ups on suppliers to identify the direct environmental impacts. We have, for example, carried out a follow-up on the dye works ScanDye, and Gabriel China carries out similar follow-ups on Chinese partners.

## The working environment

Gabriel wants to provide a good working environment for all employees with emphasis on safety, health and job satisfaction.

This wish and legislation on health and safety at work form the basis for developing the working environment.

## Employee participation

Delegation of responsibility and a process-oriented work procedure ensure the individual employee an influence on his or her own work situation at Gabriel.

Employees are involved in environmental management under Gabriel's environmental management system and they participate in the handling of environmental aspects on the basis of the individual's area of responsibility.



# Environmental approvals

Gabriel no longer needs special environmental permits to emit waste water etc. because there is no longer any production in Aalborg.

## Environmental action programme 2010/11

The environmental action programme includes the following components:

### MEASURABLE IMPROVEMENT GOALS

#### Measurable Improvement goals for Gabriel Aalborg:

- Reduction of the current quantity of waste by at least 20% from 22.0 tons to 17.6 tons.

#### Measurable maintenance of existing goals and improvement goals at the dye works ScanDye:

- Reduction of current water consumption by at least 3.6%, from 171 litres/kg to 165 litres/kg.
- Maintenance of current gas consumption at the current level of 1.11 m<sup>3</sup> natural gas/kg.
- Reduction of current electricity consumption by at least 1.9%, from 1.58 kWh/kg to 1.55 kWh/kg.

### IMPROVEMENT PROJECTS

#### Products:

- Performing LCA on selected main products based on the latest environmental data.
- Expansion and marketing of product range with C2C certified products.
- Gaining C2C certification of a polyester product.
- Preparing guidelines on how to use products to extend their useful lives.

#### Manufacturing processes:

- An investigation of options for the reduction of water consumption in the supply chains.

#### Gabriel Business Park:

- Development of and training in the use of contingency plans and communicating information to other owners in Gabriel Business Park.
- Reduction of energy requirements for cooling of server room.
- Development of allocation keys for environmental impacts between the tenants in Gabriel Business Park.

At the end of the financial year, Gabriel's employees made up 55% of the total number of users of the property. The consumption of electricity, heating and water concerning Gabriel's activities is therefore considerably lower than the figures stated in this report.

Determining principles and methods which can relate these environmental impacts more accurately to the individual tenants is therefore part of the environmental action programme for 2010/11.

- Examining the possibilities of updating and re-using samples which have been sent out on the market.

Responsibility for implementation of the various activities in the environmental action programme has been assigned, and the activities will be carried out by 30 September 2011.

Gabriel's Quality and Environment department regularly follows up on implementation of the activities in the environmental action programme.

# Further information

Please contact Gabriel if further details on the company's environmental issues are required.

Aalborg, 8 February 2011



**Anders Hedegaard Petersen**  
CEO



**Kurt Nedergaard**  
Business manager, Quality, Environment and  
Production

## Accounting policies

This environmental report was prepared in compliance with the requirements of the EMAS regulation.

The report covers the period 1 October 2009 to 30 September 2010, and the figures were prepared on the basis of the usual periodisations of the company's activities.

The environmental report includes both absolute quantities and key figures.

Information in the report is based on data from ongoing internal and external readings and reports under the environmental management system.

The deadline for completion of the next environmental report for 2010/11 is 31 January 2012.



# Environmental auditor's certificate

## DS Certificate No 567.1

DS Certificering A/S, with EMAS environmental verifier registration number 6003  
accredited for the scope (NACE Code):

13.92.10 – Manufacture of furnishing fabrics

declares to have verified whether Gabriel A/S as indicated in  
the environmental statement of the organization

Gabriel A/S  
Hjulgagervej 55  
DK-9100 Aalborg

with registration number " DK-000048" meet all requirements of Regulation (EC) No  
1221/2009 of the European Parliament and of the Council of 25 November 2009 on  
the voluntary participation by organisations in a community eco-management and  
audit scheme (EMAS).

### Reference to the environmental statement:

The environmental statement 2009/2010, dated 08.02.2011, written in Danish

*DS Certificering A/S has verified this statement written in Danish and does not vouch for translations of  
the environmental statement into other languages*

### Reference to the environmental management system:

Environmental Management Manual for Gabriel A/S, edition dated 25.11.2010

By signing this declaration, I declare that:

- the verification and validation has been carried out in full compliance with the requirements of Regulation (EC) No 1221/2009,
- the outcome of the verification and validation confirms that there is no evidence of non-compliance with applicable legal requirements relating to the environment,
- the data and information of the environmental statement of the organisation reflect a reliable, credible and correct image of all the organisations activities, within the scope mentioned in the environmental statement .

This document is not equivalent to EMAS registration. EMAS registration can only be granted by a Competent Body under Regulation (EC) No. 1221/2009. This document shall not be used as a stand-alone piece of public communication.

Issued at Charlottenlund on 14.02.2011

  
Management representative



# Environmental data

## ENVIRONMENTAL DATA AALBORG

Key indicators and environmental data (historical data – see notes) 2009/10 Actual

### Energy

District heating (m3) 35,587  
 District heating (KWh) 384,340  
 District heating (MWh) 384  
 Calculated CO2 emission (tons) 131  
 Calculated SO2 emission (tons) 7

Electricity (KWh) 405,800  
 Electricity (MWh) 406  
 Calculated CO2 emission (tons) 181  
 Calculated SO2 emission (tons) 21

Total energy (MWh) 790  
 Total calculated CO2 emission (tons) 312  
 Total calculated SO2 emission (tons) 28

### Waste water

Waste water (m3) 1,421

### Waste

Industrial waste (tons) 22.0  
 Cardboard for recycling (tons) 5.5  
 Plastic for recycling (tons) 1.2  
 Hazardous waste (tons) 0.0



Consumption of raw materials/reticulated water	2009/10	2008/09	2007/08	2006/07	2005/06
Key indicators and environmental data	Actual	Actual	Actual	Actual	Actual
Yarn (tons):	664	650	977	887	751
Polyester articles (kg)	341	270	371	-	-

## ENVIRONMENTAL DATA SCANDYNE

Key indicators and environmental data	2009/10	2008/09	2007/08	2006/07
	Actual	Actual	Actual	Actual
Natural gas (m3)	1,238,957	994,551	739,164	37,484
Calculated CO2 emission (tons)	2,784	2,235	1,661	84
Calculated CO2 emission kg/kg (m3/kg)	2.49	3.06	2.5	2.85
	1.11	1.36	1.18	1.27
Electricity (KWh)	1,769,108	1,292,385	1,247,930	629,181
Electricity (MWh)	1,769	1,292	1,247	629
Calculated CO2 emission (tons)	791	578	558	281
Calculated SO2 emission (tons)	90	66	64	32
Kg CO2/kg	0.71	0.70	0.89	0.95
Kg SO2/kg	0.08	0.09	0.10	0.11
Electricity (KWh/kg)	1.58	1.77	2.00	2.13
Waste water (m3)	191,107	148,838	112,868	63,137
(l/kg)	171	204	180	213

# Notes

## HISTORICAL DATA

Contrary to previous years, environmental data are no longer affected by production in Aalborg. These historical data were therefore not included but they can be found in previous reports.

In May 2009, production was completely outsourced to the dye works ScanDye, which meant significant environmental indicators and impacts from ScanDye. The relative environmental impacts in particular are relevant in relation to Gabriel's production because total consumption also includes production for customers other than Gabriel.

Historical consumptions of the most important raw materials have been provided for the last five years as this consumption is not affected by the place of production.

## KEY INDICATORS

Gabriel's environmental data include key indicators (the figure A in accordance with EMAS III) such as energy efficiency, material efficiency, water, waste and emissions, which express the total annual input/impacts in the various areas.

The figure B which expresses total output, and the figure R which expresses the ratio A/B, which is also indicated under environmental data.

## ENERGY

A cooling of 35 degrees C was used for conversion of m3 of district heating to KWh.

Calculation factors provided by Energicenter Aalborg were used for calculation of CO2 and SO2 emissions.

Because of uncertainty with respect to emissions in Lithuania concerning electricity, Danish key figures were used. An attempt will be made to pro-

vide Lithuanian data in future reports.

Emissions of NOx and CH4 (methane) were not included as the quantity emitted is considered insignificant.

Consumption of district heating was primarily waste heat from production of electricity.

A varying part of the electricity consumption was renewable energy from wind turbines and hydro-electric power.

The Danish Energy Agency's standard factors of 17 January 2011 for calorific value and CO2 emissions were used concerning natural gas emissions.

## WASTE WATER

Waste water emissions equal the purchased quantity of public potable water.

## CONSUMPTION OF RAW MATERIALS

The stated consumption of raw materials includes waste during production, which was approx. 5%. The consumption of raw materials includes Gabriel's total consumption.

## WASTE

Waste recorded does not include construction and metallic waste from renovation of buildings and plant.

## BENCHMARKING

It has not been possible at this time to obtain relevant benchmarking data.

# Notes - continued

## REQUIREMENTS CONCERNING NOISE

The Danish Environmental Protection Agency's Guideline No 5/1984: External noise from enterprises specifies the following requirements regarding noise:

“The noise generated by the enterprise – measured outdoors – expressed as the equivalent corrected noise level in dB(A) may not exceed the values specified below at any time in the designated areas”.



		H1 Kærby Light industry	H1 Kærby Residential properties	Allotments K.P.till.2.33	B1 Kærby	R1 Frydendal
<u>Day:</u>	<u>Times:</u>					
Monday-Friday	06.00-18.00	60	55	50	45	50
Saturday	07.00-14.00	60	55	50	45	50
Saturday	14.00-18.00	60	45	45	40	45
Sunday and holidays	07.00-18.00	60	45	45	40	45
<u>Evening:</u>	<u>Times:</u>					
All days	18.00-22.00	60	45	45	40	45
<u>Night:</u>	<u>Times:</u>					
Monday-Friday	22.00-06.00	60	40	40	35	45
Saturday, Sunday and holidays	22.00-07.00	60	40	40	35	45
Max. noise level at night:			55	55	50	55

The specified limit values for noise were determined on the assumption that they will be observed within the following times:

- For the day period 7.00-18.00 (6.00-18.00 Monday-Friday), the limit values must be observed within the noisiest eight-hour period.
- For the evening period 18.00-22.00, the limit values must be observed within the noisiest hour.
- For the night period 22.00-07.00 (22.00-06.00 Monday-Friday), the limit values must be observed within the noisiest half-hour”.



**GAJA C2C**

Gaja C2C is unrivalled in terms of sustainability.

It is Cradle to Cradle certified, has the EU Flower eco-label and Oeko-Tex health label, is guaranteed free of heavy metals, and is produced in accordance with the ISO 14001 environmental standard.